



GLOBAL
JET SALES

Challenger 300 | S/N 20295

Aircraft Specification



Asking Price: \$ 9,950,000

- 8760 Total Time | 4100 Landings
- Engines on MSPG | Airframe on Smart Parts Plus | APU on MSPG
- Proline 21 Advanced

**AIRCRAFT**

Model	Challenger 300
Serial Number	20295
Registration	OK-AOA
Aircraft Base	LKPR (Prague)
Seating	9

AIRFRAME

Year	2010
Total Time (HRS)	8498
Landings	4001

FEATURES

Proline 21 Advanced	Datalink 2000+
Iridium Satcom	WAAS LPV
ADS-B Out	CDPLC

INTERIOR ■

Nine place interior w/fwd dbl club, aft club opp 3-place divan. Cream leather seats with brown piping, brown carpet, dark hi-gloss wood veneer, brushed chrome fittings. Fwd galley w/ coffee maker. Entertainment includes airshow 4000. Aft belted lav.

EXTERIOR ■

Overall white w/blue and gray accent stripes.

ENGINES

Engines	Eng 1: 8020	Eng 2: 8498
	Cyc 1: 3803	Cyc 2: 4001



AVIONICS

COLLINS PROLINE 21 ADVANCED	COLLINS 4000 TCAS II W/ CHANGE 7.1
COLLINS VHF-4000	ICG IRIDIUM
COLLINS NAV-4000	ARTEX 406-1
COLLINS ADF-4000	MAGNASTAR C-2000
COLLINS DME-4000	HONEYWELL MK VIII E
COLLINS TDR-94D MODE S	L3 CVR / FLT RECORDER
COLLINS RTA-854 ENH	COLLINS APS-3000
COLLINS FMS-5000 V SPEEDS	
COLLINS GPS-4000	
COLLINS HF-9031 W/ SELCAL	

MAINTENANCE

96 MO DUE 05/27

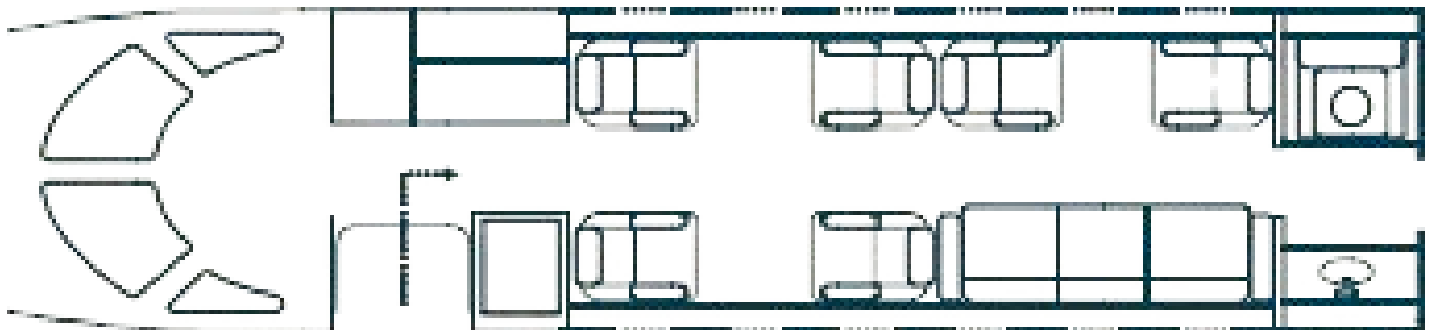
192 MO DUE 12/26

MAINTENANCE PROGRAMS

Engines	MSP	\$583.43 per hour/per engine
Airframe	Smart Parts Plus	
APU	MSP	\$130.97 per APU hour



[CLICK FOR MAINTENANCE REPORTS](#)

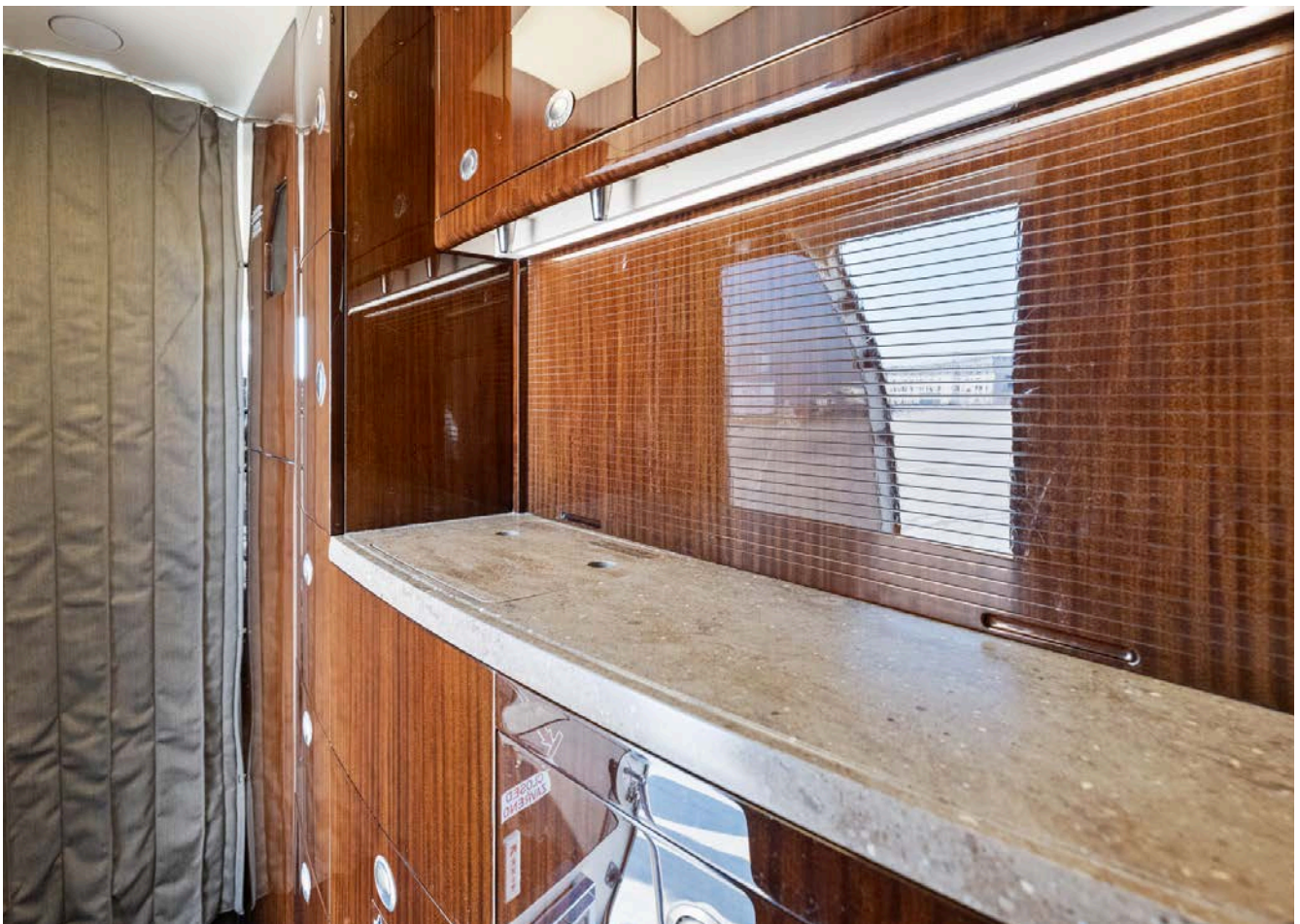
















DISTINCTIVE. PERSONALIZED. DEDICATED.

CONTACT US

Alexander Janas
aj@globaljetsales.com

Glebs Strazdins
gs@globaljetsales.com



(727) 864-9443



1025 1st Ave N
St. Petersburg, FL 33705